

# PROCESS MINING

Graphical analysis of operational business processes

Process mining is a method of analysis which goes beyond the pure presentation of key process data. Process mining visualizes process workflows from system data, recognizes contextual relationships, prepares and presents them in graphical analytic form and suggests improvements.

01100

10110

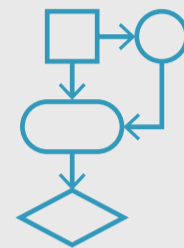
11110

10010

1

## DISCOVER

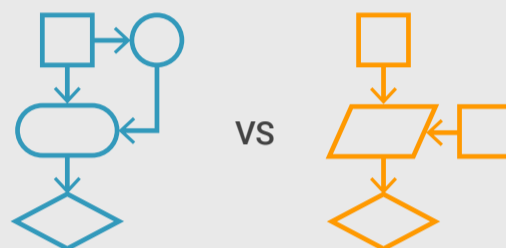
Analysis of key process data and the reconstruction of real processes



2

## HARMONIZE

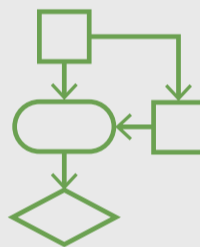
Comparison of actual process with target process



3

## ENHANCE

Process adaptation and enhancement of models



## AIMS



Recognise bottlenecks



Avoid unnecessary process steps



Shorten throughput times

## THE BENEFITS TO YOU



Acceleration



Quality



Transparency



Efficiency



Objectivity



Clarification