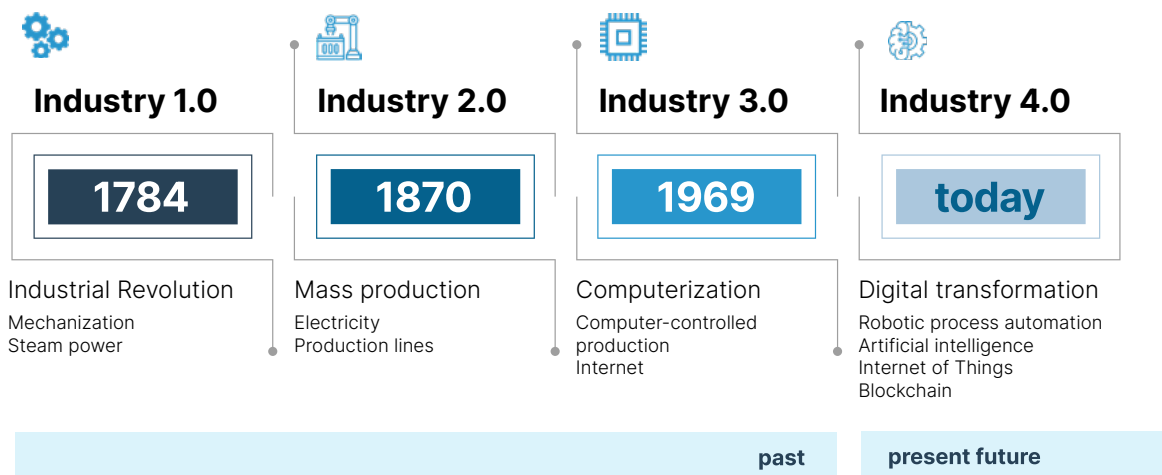


# RPA-Journey

Every journey needs a map

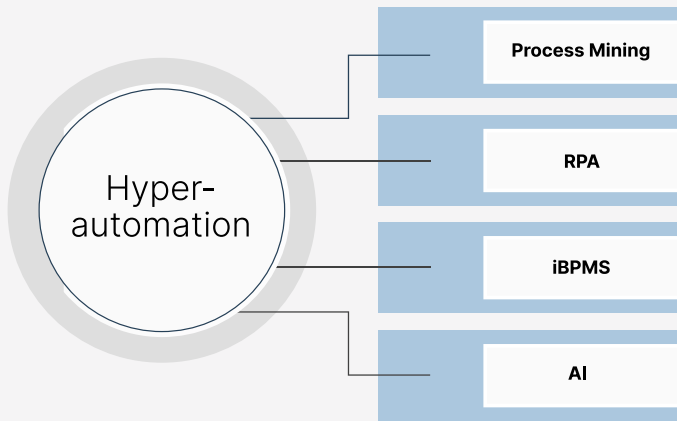
## Vision



## Hyperautomation – a strategy for increased profitability through E2E automation

The automation of business processes has been developing into a decisive component of digital value creation for several years now. However, the successful use of automation depends heavily on an integrated, end-to-end strategy. As process experts, we carry processes in our DNA, and that has enabled us to develop a comprehensive

and integrated hyperautomation consulting approach for our customers. In addition to the technical aspect, which covers the systematic coordination of process mining, **robotic process automation (RPA)**, and **artificial intelligence (AI)**, it includes **long-term planning from the organizational perspective**.

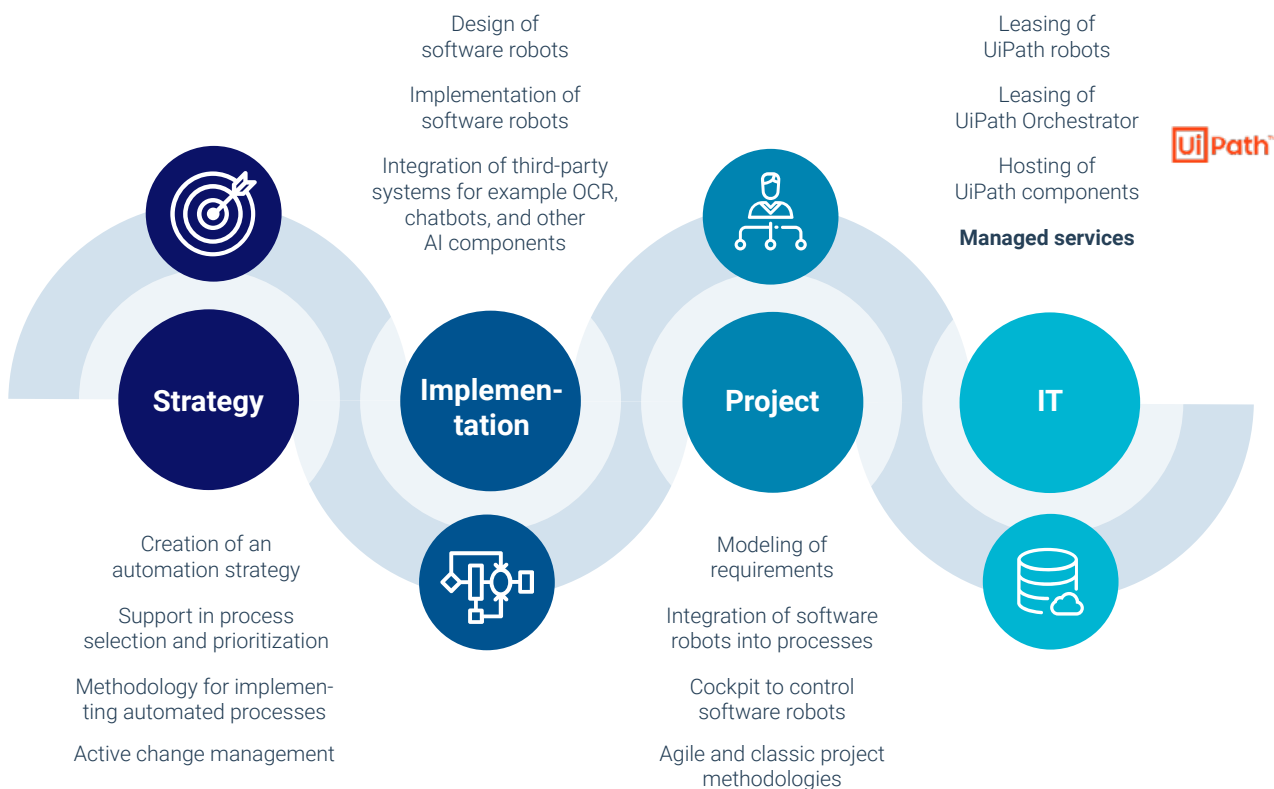


- Strategic approach
- Efficient & intelligent process management
- Top-down approach

## RPA as an important guide on your journey

Robotic process automation is a major part of the hyperautomation approach. That's why we offer maximum flexibility for RPA by combining software robots with our model-based suite. This results in all-new possibilities for the digitalization of business processes in your organization.

Scheer recommends a customer- and business-oriented strategy, that identifies comprehensive RPA potentials based on facts after a few pilot implementations and prioritizes their profitability with the help of an ROI analysis. At the same time, our approach determines the change and governance methods that will facilitate smooth operations. Together with our customers we create a detailed RPA operating model to uncover and solve business and technical dependencies.



## Portfolio for E2E automation

## RPA candidates (PoC)

There are various ways to make use of RPA in a number of different departments which can lead to a significant work simplification and an increase in efficiency.



## About Scheer

As a consulting and software house with proven process expertise, Scheer Group supports companies in the development of new business models, with the optimization and implementation of efficient business processes as well as with the dependable operation of their IT systems. In the development of products and services, a particular focus lies on supporting companies with their digital transformation.



Do you have questions on these subjects, or would you like to talk with us about specific projects? **Simply send us an e-mail or give us a call!**

[elisabeth.schanz@scheer-group.com](mailto:elisabeth.schanz@scheer-group.com) | +49 681 96777-0

**Scheer**